

AN OPEN AND AFFIRMING CONGREGATION OF THE CHRISTIAN CHURCH (DISCIPLES OF CHRIST)

WGCCC Picnic - Sept. 11 on the lawn!

See Page 3 for details.



New space, new year for Project NOW!

Now in its 6th year, Project NOW is going strong. Last month, Project NOW moved upstairs from the basement, just down the hall from the Fellowship Hall. The new location will make the weekly process less cumbersome by eliminating the use of the elevator and increasing the proximity to the kitchen. I am thrilled about the new location and want to thank Daun Hashbarger, Jeff Moore, Max and Vicki Ott, and Pat Roseman for helping the DeKinder family clean, organize and move Project NOW.

Project NOW will begin weekly food delivery on Friday September 9, following the summer school break. We are always looking for volunteers to pack and deliver the 16 weekly food bags. If you are willing and able, please sign up via the link below. Any program questions can be directed to Julie DeKinder at dekinderj@umsl.edu

<https://www.signupgenius.com/go/20F0945ABA722A2F85-volunteers>

Hot off the presses: Disciples Women Yearbook

The school buses are running again and that reminds us that it is time for the Disciples Women to begin their monthly meetings. Though the groups were not meeting during July and August, we continued service projects, The Neighbor Fund and the Food Bank at Church. We extended our efforts to contact our shut-ins and send cards to those who were ill and those who have lost family members. Our attempt to stay in touch with each other always continues in the summer, so we can improve our reaching out to those in need. The new yearbooks are hot off the press and the group leaders will make them available to you in the coming week. Thanks to Sally Smith and Laura Stuetzer for their efforts to revise the yearbook.

The Budget /Finance meeting was held on July 21. It was determined that some of the leftover money from last year would be given as follows: \$300 to MBCC Welfare Fund and \$200 to WGCC Neighbor Fund. Our wish was to provide money to those who need necessary supplies such as food, bus passes for work and, as those in charge see the need. At that meeting, it was determined that the remainder of last year's money would be for our startup money for the new year. That amount will be \$210. The collection for the Blessing Box will continue and the Least Coin money will not be collected in 2022-23.

In our new year we will have only two groups, Tabitha and Martha. For the General Meetings, the Tabitha Group will be responsible for the Devotional and Program for the months: September, December and March while the Martha Group will be responsible for the meetings in October, April and May. We will meet for the first time on this Thursday, September 1, 2022 at 1 p.m. in Fellowship Hall. Following the General Meeting, there will be a Business Meeting. The program will be a surprise, so be sure to attend. Sally Smith will give the devotional and Laura Stuetzer will present the program.

The Martha Group will meet at 1 p.m. on September 8 in the Heritage Room. Tabitha Group will try to meet outside on the front patio (weather permitting) on Thursday September 8 at 7 p.m.. Both groups are studying the Just Women magazine Bible Study, WHEN WOMEN CONNECT is the theme this year.

Disciples Women has made the following change: We are collecting money only for the monthly service projects. All checks should be written to WEBSTER GROVES CHRISTIAN CHURCH with the memo line noting DW Service Project for September (or the month that you designate). The checks can be brought to the meetings, mailed to the church or dropped in the gold mail slot behind Steve's desk.

Jane Martin



SERVICE ALERT!

Disciples Women's service is changing a bit for September and October.

We are combining these two months and devoting both months to detergent for WRHM. In the past, we have had two separate months for detergent service. This year we will do the months consecutively. We are not doing a school supply collection in September as in past years, because WGCC did an all-church school supply collection in July.

Please check page 10 in our new Yearbook for a listing of all the monthly service projects.

Janie Joplin and Pat Roseman

Let's come together and celebrate!

Let's all plan to come together on **Sunday, September 11** for an outdoor worship service followed by a picnic on the WGCC lawn! Weather permitting, we'll worship under the trees, and then spend time outdoors talking with each other and sharing together. WGCC will provide BBQ meats and a veggie option (grillers wanted - please contact Pastor Jeff!) We'll share more details in the next few days. Please plan to bring lawn chairs or blankets, if you like. We'll have tents and chairs and tables set up, as well.

Invite friends! Remind family! See you on September 11!

Grab & Go BBQ

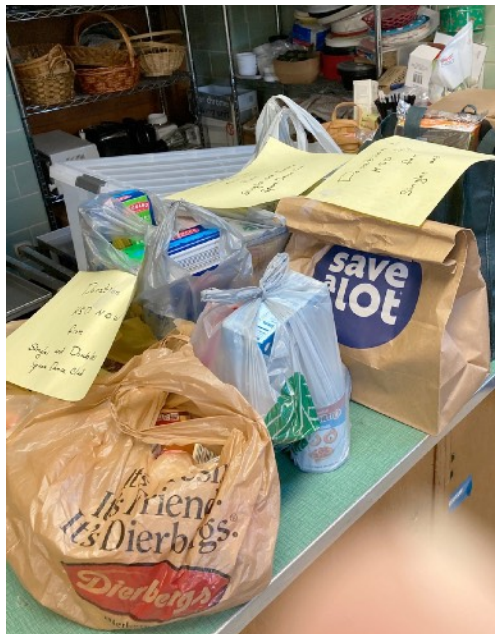
For the Shepherd's Center
Friday, September 9,
5:00-7:00

Webster Groves Christian
Church Parking Lot

BBQ meals to go with all of
your favorite sides will be
available for curbside pickup.
Tickets are \$20 each.

Get tickets: [https://
shepherdscenter-wk.org/
home/grab-and-go/](https://shepherdscenter-wk.org/home/grab-and-go/)

Thank you, Square Dancers!



"Project NOW would like to extend a huge Thank You to the members of the singles and doubles square dancers for their benefit dance that has provided both food and monetary support to Project NOW! This was a welcome surprise and wonderful gift for Project NOW!"

Singles & Doubles Square and Round Dance Club

FREE Intro CLASS

Learn To Square Dance

FREE Intro CLASS



** Live Lively **
Try Square Dancing
For the Health of It!!



- As much **Physical Exercise** as walking, with **BIG TIME FUN** thrown in
- Dancing with no fancy footwork, just walk with the music
- AMA says one of the **only physical exercises** that **increases mental acuity**
- All are welcome: older children & teens, adults, couples and singles
- No experience necessary
- Wear casual clothes



**COME CHECK IT OUT
FIRST LESSON FREE!**

Tuesday September 13, 2022 at 7:00pm

When: Classes continue on Tuesdays at 7:00pm for 12 weeks (\$5/class)

**Less expensive than a health club and A LOT more fun!*

Where: Webster Groves Christian Church, 1320 West Lockwood Ave. 63122

**Southwest corner of Berry & Lockwood. Parking lot and entry to hall are in the rear of the church*

More info: Mary Vanicelli 314-401-6355 or e-mail: mvan1526@gmail.com
Sue Mertens 314-603-1042 or e-mail: msuem@att.net
Website <http://www.SinglesandDoubles.org>
Facebook <https://www.facebook.com/SinglesAndDoublesSquares>

| <u>Square Dance Lessons</u> | <u>Square Dance Lessons</u> | <u>Square Dance Lessons</u> | <u>Square Dance Lessons</u> |
|--|--|--|--|
| Tues Sep 13, 7:00PM Webster Groves Christian Church (Berry & Lockwood) 1320 W Lockwood 63122 | Tues Sep 13, 7:00PM Webster Groves Christian Church (Berry & Lockwood) 1320 W Lockwood 63122 | Tues Sep 13, 7:00PM Webster Groves Christian Church (Berry & Lockwood) 1320 W Lockwood 63122 | Tues Sep 13, 7:00PM Webster Groves Christian Church (Berry & Lockwood) 1320 W Lockwood 63122 |
| ☎ Mary 314-401-6355 ☎ Sue 314-603-1042 🌐 SinglesAndDoubles.org 📘 SinglesAndDoublesSquares | ☎ Mary 314-401-6355 ☎ Sue 314-603-1042 🌐 SinglesAndDoubles.org 📘 SinglesAndDoublesSquares | ☎ Mary 314-401-6355 ☎ Sue 314-603-1042 🌐 SinglesAndDoubles.org 📘 SinglesAndDoublesSquares | ☎ Mary 314-401-6355 ☎ Sue 314-603-1042 🌐 SinglesAndDoubles.org 📘 SinglesAndDoublesSquares |

Regional Assembly October 6-8, 2022 Lake Ozark Christian Church

We are very excited about being able to be together this fall for our Regional Assembly and we hope you'll join us for three days of wonderful activity. Can't be there the whole time? We understand and offer registration options for portions of the event. There's even a virtual option that brings the Assembly to you.

On Thursday you'll have your choice between two educational and inspirational seminars:

Christ Within Us: Finding Your Spiritual Leadership Flow Using the Enneagram. Presenter: Frank Broyes. Each participant will receive a personal assessment.

Christ Among Us: Congregations Flourishing Conference. Presenters are seven of our Mid-America clergy speaking on: Pray, Spirit, Release, Re-Calibrate, Transfigure, Nourish, & Flourish.

Then Thursday evening is the 'People of the Cloth' Radio Hour. This will be a fun evening of heart-sharing storytelling, music, and dessert in the chapel. Come and share your story or just take it all in.

Friday's activity includes Bible study led by one of our new Associate Regional Ministers, a dialogue sermon by Regional Ministers Paul Koch and Ron Routledge, your choice of lunch group, and [your choice of workshops](#). Dinner is on your own and your choices include a [Celebration Sunset Dinner Lake Cruise](#) (use coupon code LAKE for 10% off while promotion lasts!).

On **Saturday** we'll have another brief Bible study by one of our new Associate Regional Ministers and a message from our **guest speaker** [Rev. Yvonne T. Gilmore](#), **Interim Administrative Secretary of the [National Convocation](#) and Associate General Minister & President**. Our business session will include the treasurer's and other reports, and the election/installation of new Regional Board and Commission on the Order of Ministry members. Then it's your choice of lunch group and a final worship with communion.

Exhibit area: We do welcome our ministry partners to set up displays in our exhibit area, though space is quite limited and each will have to bring their own supplies including table (six foot maximum) and power/extension cords. Displays may be set up on Thursday, October 6 between 9am and 4pm, or Friday, October 7 at 9am. There is no additional fee for a display, but you must register/pay for the days you will be present, noting where indicated on the registration form that you plan to set up a display. You will receive a confirmation if there is space still available.



Register online now: <https://bit.ly/3REMDDR>


Walk to fight hunger

The 2022 CROP Hunger Walk and Concert will be held on Sunday, October 2 at Eden Theological Seminary, 475 E. Lockwood Ave., Webster Groves, MO 63119; and we hope that you will make plans to participate. Check-in is at 4:30 p.m., the Walk begins at 5, and the Concert is at 7 p.m. in the Wehrli Chapel in the Press Building on the Eden campus. As has been the case the past couple of years, due to the ongoing pandemic, participants may also walk virtually. For further information go to the following website:

<https://events.crophungerwalk.org/2022/event/saintlouismmo>

The CROP Concert is also the 11th Annual Eden Festival of Psalms, and it will again feature nationally known singer/songwriter/Psalm-writer Richard Bruxvoort Colligan, along with a host of other talented musicians. If you or your people don't do online donating, you may write a check to CWS/CROP and mail it to CROP Treasurer, Clint McCann, 672 Marshall Ave., St. Louis, MO 63119-1922. Questions or need hard copy materials? Contact Clint at cmccann@eden.edu or 314-619-0599. For details on the work of Church World Service throughout the world, including the very timely settling of refugees, see the following:

www.cwsglobal.org



World Peace
CONCERT
A CELEBRATION OF
PEACE, LOVE & HARMONY
WEBSTER GROVES GARDEN CAFE "BACKSTAGE"

SAT, SEPTEMBER 10
6 PM - 9 PM
UNDER THE STARS
9 OUTSTANDING
PERFORMERS EACH
PLAYING A 20 MINUTE SET

FREE AND OPEN TO
THE COMMUNITY
FOOD AND BEVERAGES
FOR SALE IN THE CAFÉ
COME AND GIVE
PEACE A CHANCE!

2022 PERFORMERS PERFECT STRANGERS
NORTHBOUND TRAIN WHISKEY CLUB BAND HOME REMEDY MASS ECLECTIC
CATCHING THE WESTBOUND JOHN CULVER WILSON POSEY LULU WILL SOLL

Join us for our virtual Bible study or Sunday class

Join us on Mondays for our Zoom Bible Study.

If you have a smart phone, it helps to download the free Zoom app, but the program will also work on most desktop computers if you have a camera and microphone installed.

Bible Study

Mondays, 3 p.m.

<https://zoom.us/j/381789752>

Or dial in: 312 626 6799

Meeting ID: 381 789 752

Koinonia Sunday School Class

Sunday, 8:45 a.m.

<https://zoom.us/j/652179864>

Meeting ID: 652 179 864

Password: 012104

Prayer concerns for WGCC and MBCC

For Tim and Kathy Carson, and their family as they attend a service of remembrance this month for Kathy's mother, Bertha, for whom a stone has been placed in the WGCC Memorial Garden.

For Chris and Sara Webb. Chris has been diagnosed with early stages of dementia.

Prayers for a friend of Billie Swartz, whose 5 year old granddaughter Harper Shamus, was recently diagnosed with an inoperable brain tumor.

For Denise Pahl, who is recovering from surgery.

For Graham, a 3-year-old awaiting a heart transplant. He's the son of a colleague of Lisa Cripe's.

In celebration of Jaxson Swartz's adoption by Keiler becoming official.

In celebration of the 60th wedding anniversary of Janie and Joneal Joplin.

For Max Ott's neighbor, Jim Moore, who suffered a stroke

For Rev. Betsy Happel (Kirkwood UCC), in the loss of her husband Rick

For Gilda Rzczowski

For Tom Wood, awaiting medical test results

For Marilyn Combs, as she recovers from medical issues, and for her youngest brother, Gary, who suffered a heart attack

For Max Ott's friend who suffered a heart attack, but is recovering. Also "traveling prayers" for his family members

Congrats to John and Denise Pahl on 45 years of marriage!

For Jn Baptiste Wilkens, as he meets with the Immigration Office later this month

For Carolbeth True, as she recovers from knee surgery

For Lisa Cripe's friend, Gretchen, facing several health issues

For the family and friends of Kay Love's sister, whose ex-husband passed away

For the family and friends of a family that Jeff Moore is familiar with; life support is being removed for their sibling

For Carole Hughes' schoolmates Connie and Susan, who have both lost children to suicide

For Jacob, the son of Regional staff Jenny Brown, whose cancer may have returned after years of remission

For John Dyess, recovering from knee surgery and some complications

For the family of Ann Brown

For the brother of Lisa Cripe, as he battles health issues, and for the son of a fellow teacher awaiting a heart transplant

For Lawrence Ludwig

For Susan Burney, as she continues to recover from hip surgery

For Frank, the 17 year-old nephew of Robin Woodrome's co-worker, who had a heart transplant, but is still suffering medical issues

For Laura Stuetzer's friend, Cindy, recovering from cancer surgery.

For Edvonia Scott and Breona Hawkins, as they seek ordination

For Devoree Crist's friend, Deb

For Marilyn Combs, as she battles vertigo

Barb Merrell asks prayers for Rosemary, Carolyn, Jack, and her friend Wanda, who fell during therapy. Also for her friend Debbie, who has COVID, and Rev. Ken Dean, who is in hospice

For Robin Woodrome's mother, Grace, hospitalized with heart issues

For Devoree Crist's brother, John, and sister, Rosemary

For Susan Burney's sister Carol, suffering from Alzheimers

For Pauline (Smith) England

For Shirley Arther

For Eva Moutrie

For Gregg Eiler's sister-in-law, as she battles breast cancer.

For Jane Yount

Prayers for DeVere and Bev Shoop

WEBSTER GROVES CHRISTIAN CHURCH MISSION STATEMENT:

Our mission: Following Jesus' teaching and sacrificially serving the people who are the most marginalized.

Webster Groves Christian Church

(Disciples of Christ)

A Global Mission Congregation
1320 West Lockwood Ave.
St. Louis MO 63122



The SEGA connection newsletter is available at <http://www.mid-americadisciples.org/>

Webster Groves Christian Church

1320 West Lockwood Avenue

Saint Louis, MO 63122

Phone: 314-961-3232 / Website: www.wgcc.org

Rev. Dr. Jeff Moore, Pastor

jeffmoore@wgcc.org

Robin Woodrome, Choir Director

Lisa Cripe, Organist

lisacripe@wgcc.org

Jeff Wolf, Lead Custodian

jeffwolf@wgcc.org

Gary Smith, Custodian

Steve Staicoff, Office Manager

admin@wgcc.org

Witness Articles

brosepd@hotmail.com