

Unravelling the complexities of Israel and Palestine

You are invited to a Region-Wide Webinar to learn more about the ongoing complexities in Israel and Palestine on Wednesday, September 1 from 7-8:15 p.m. via Zoom.

A follow up survey will be provided for those who would like to learn more after the session.

Rev. Jeff Wright and Janet Wright will be our guides.

They have served as volunteer Global Service Workers to Palestine/Israel through Global Ministries and have traveled to the region many times.

Join Zoom Meeting
<https://us02web.zoom.us/j/86991729558?>

Meeting ID: 869 9172 9558

Passcode: 565702

The fruit of our efforts, for a good cause



Did you know that Webster Groves Christian members and friends provide funding, food, cooks, and servers for the community lunch served at Memorial Boulevard Christian Church on the third Thursday of each month?

The tomatoes from the WGCC garden provided nutrition on 100 sandwiches for that effort.

We can always use more help with this important project.

Shepherd's Center on the Move
Grab & Go BBQ

Friday, September 17, 5:00-7:00
Webster Groves Christian Church Parking Lot
1320 W. Lockwood Ave., Glendale, 63122

BBQ meals to go with all of your favorite sides will be available for curbside pickup

Tickets on sale now, \$20/each
go to www.shepherdscenter-wk.org for online sales

All proceeds benefit the Shepherd Center's essential services for older adults – medical transportation, grocery delivery and more.



**Grab
& Go
BBQ**

Responding to global crises

AFGHANISTAN

When you give to Week of Compassion, your support will help those in need in places like Afghanistan, while also supporting resettlement in the United States.

In recent days many of us have witnessed the dire situation in Afghanistan. The Taliban entered Kabul, seizing control as the Afghan government collapsed. As U.S. troops withdraw from Afghanistan, Afghan allies and refugees are seeking to flee the country as the Taliban take over.

As this humanitarian crisis unfolds, Disciples are asking how to help. Week of Compassion is working with partners in the region to provide needed relief and help meet urgent needs. Those needs are still emerging, and the situation is very delicate. But know that gifts to Week of Compassion will go to the partners best situated to respond.

Alongside the humanitarian needs within Afghanistan and neighboring countries are the needs of those who have fled. This is a critical moment in which to work for a robust refugee resettlement program here in the United States.

Together with our partners, Week of Compassion has walked alongside communities in comparable times of turmoil and uncertainty throughout history. Emerging from the humanitarian crisis of World War II, Week of Compassion has been our wider church's response to human suffering for more than 75 years. In the 1980s for example, Week of Compassion helped support the robust United States resettlement of over 100,000 Southeast Asian refugees, including those from Laos, Cambodia and Vietnam. As we face this moment in Afghanistan now, Noel Andersen of Church World Service says, "This is a time when we really need to look at what is our moral role in the world, and it is really critical that we step up and honor our commitments to these folk."

When you give to Week of Compassion, your support will help those in need in places like Afghanistan, while also supporting resettlement in the United States. There are several ways you can help! Learn more about how to get your congregation involved in local refugee ministry, and prepare to welcome resettled families to your community. Get involved by calling your representatives and advocating for the administration to increase the annual cap on entry numbers; in particular, encourage them to expedite processing for Special Immigrant Visas for those who assisted U.S. Troops, ensuring that our allies in Afghanistan are brought to safety.

In times of instability and uncertainty within the global community, the support of our wider Church through Week of Compassion is critical. Our faith as Disciples of Christ compels us to action. Whether you give, participate in U.S. resettlement, or join in prayer for our siblings in Afghanistan, your compassion will have a long-term impact on the lives of many during this critical time.

LEARN MORE: <https://bit.ly/cwsglobal-afghanistan>

HAITI

As the people of Haiti navigate the impact of compound disasters, Week of Compassion partners continue to respond and take part in ongoing damage assessments.

In the wake of the major earthquake in Haiti, Week of Compassion partners have been working to respond to immediate needs such as shelter, food and clothing, WASH (water, sanitation and hygiene), and first aid. In the days since the earthquake, Tropical Storm Grace (since upgraded to a hurricane) made landfall in southwestern Haiti. The storm's heavy rains caused flash flooding and landslides, making immediate response to the earthquake even more difficult and hindering search and rescue operations. Poor internet and phone connections make communication challenging. The death toll is now over 2,000, with nearly 10,000 injured, making the need for relief and medical care even more urgent.



Furthermore, the earthquake (and Tropical Storm) struck the country during the harvest season for beans, maize, and yams. This impact is likely to increase food prices and contribute to further food insecurity--in a time when the country was already struggling under the weight of the COVID-19 pandemic and its economic effects.

As the people of Haiti navigate the impact of these compound disasters, Week of Compassion partners continue to respond and take part in ongoing damage assessments. Plans are in development for long-term response as well. As with previous responses in Haiti, construction and building projects will aim to mitigate the impact of future disasters. With knowledge of past disasters to inform current response, our support will help the people of Haiti prepare for the future while meeting present needs. Often, building for today can save lives tomorrow--as was certainly the case in this recent earthquake.

Week of Compassion is grateful for long-standing relationships with partners who know the needs now--and can foresee needs that might arise later as well. Together, we can make a difference, even when the need is so great.

Donate online; text WoC to 41444;

or mail checks to: P.O. Box 1986

Indianapolis, IN 46206

Designate your gifts for Refugees; Earthquake; or Where Most Needed

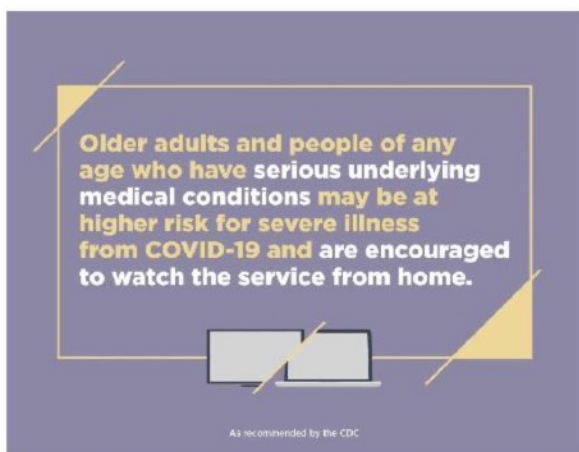
LEARN MORE: <https://bit.ly/cwsglobal-haiti>

Sunday morning worship services will continue to be live-streamed on Facebook every Sunday morning at 10:30 a.m. All are welcome - please invite your family and friends to tune in!

**The link to the page is:
<https://www.facebook.com/WGCCDisciples/>**



Guidelines for our in-person worship



Recent prayer concerns

- For Donna Savage and her family following the death of Donna's daughter, Jennie, last week in St. Louis.
- For Shirley Arthur who is recovering after a series of strokes.
- For Laura Stuetzer's stepdaughter Heather, and her family recovering from flooding in Louisiana.
- In celebration of Jacque Foster marking 25 years as pastor at Compton Heights Christian Church.
- For all the victims of natural disasters in the Gulf Coast, in the West and in Haiti.
- For John Dyess, recovering from a broken rib.
- For Alice, Jane, and Anna Yount, and their family, as they deal with medical issues; Alice's brother (Anna's father) suffered a massive heart attack and is recovering.
- For Marilyn Stewart, recovering from a fall.
- For Lawrence Ludwig, recovering from hernia surgeries.
- For Bill and Arlene Sullivan as Arlene recovers from hip surgery.
- For Jane Yount
- For Michelle Fielden
- For Eva Moutree
- For Gregg Eiler's sister-in-law, as she battles breast cancer.
- For Devoree Crist's sister, Rosemary.
- Prayers for DeVere and Bev Shoop: DeVere's neurological condition has no cure.
- For all teachers and students as the school year begins.

Celebrating the life of Rev. Suzanne Webb

Suzanne Jean Webb peacefully transitioned from her physical life, Friday, August 13, 2021, in St. Louis after a lengthy bout with ALS. She was 74 years old.

In 2004 she was called to serve as the Senior Minister at Union Avenue Christian Church. She remained in service to that congregation for 13 years, until her retirement in 2017. She served on multiple boards including Eden Theological Seminary, Christian Unity, Interfaith Ministry (formerly Council on Christian Unity), the Christian Church Foundation, and Union Avenue Opera.

WEBSTER GROVES CHRISTIAN CHURCH MISSION STATEMENT:

Our mission: Following Jesus' teaching and sacrificially serving the people who are the most marginalized.

Webster Groves Christian Church

(Disciples of Christ)

A Global Mission Congregation
1320 West Lockwood Ave.
St. Louis MO 63122



The SEGA connection newsletter is available at <http://www.mid-americadisciples.org/>

Webster Groves Christian Church

1320 West Lockwood Avenue

Saint Louis, MO 63122

Phone: 314-961-3232 / Website: www.wgcc.org

Rev. Dr. Jeff Moore, Pastor

jeffmoore@wgcc.org

Robin Woodrome, Choir Director

Lisa Cripe, Organist

lisacripe@wgcc.org

Jeff Wolf, Lead Custodian

jeffwolf@wgcc.org

Gary Smith, Custodian

Steve Staicoff, Office Manager

admin@wgcc.org

Witness Articles

brosepd@hotmail.com