

Help kick off school

NOW

Nutrition n Weekends



Project NOW will resume food delivery on **Aug. 30**. There will be a lot of opportunities for volunteers to donate time or fresh fruit. Please follow the link below to sign up!

In addition, the Kirkwood School District's Project Now planned its kick-off party **at 6 p.m. Aug. 28** at Webster Groves Christian Church. Pastor Jeff and Michele Condon, superintendent of Kirkwood Schools, will be on hand to make opening remarks. Come help pack some bags and grab a free taco, courtesy of Amigo's Taco Truck.

KSD NOW organizers consulted with WGCC's Project NOW as they envisioned their work. Julie DeKinder and Jeff met with them as they got organized, and Julie worked with them to discuss supplies, menus, procedures, and practices.

WGCC has offered space in our Chapel basement (where WGCC's Project NOW food and supplies are stored) for storage and collection of KSD NOW food and supplies, as well as space in the church building for KSD NOW "packing parties" and other events.

Our collaboration with KSD NOW is one more exciting step in our partnership with Kirkwood area schools and our commitment to use the resource of our building to serve those in our community.

SIGN UP TO DONATE FOOD AT:

<http://bit.ly/wgccnow>

Please contact Julie DeKinder if you have any questions: dekinderj@umsl.edu

Disciples Women are back in season!

When we think of fall, our thoughts turn to **DISCIPLES WOMEN OF WGCC**, where spiritual growth, a better understanding of the Bible, deepening our relationship with God, reaching out in faith and loving service to those in need, leadership opportunities, spiritual growth, enrichment and fellowship are our purpose.

Disciples Women welcomes all women of WGCC to the first Thursday September General Business Meeting at 11 a.m. on Sept. 5 in the Heritage Room followed by a Bring Your Own Lunch at noon in Fellowship Hall.

Following lunch, Alice Yount will give a devotional, and the speaker for our first meeting will be our own Susan Burney. Ella and Susan Burney are certified as a TOUCH Therapy dog team by DUO Dogs (formerly Support Dogs). Susan will talk about and demonstrate Ella's training and responsibilities. Susan will be accompanied by Beth Greco, the volunteer coordinator for DUO. She will be able to tell the story of assistance dog training from the breeding of the puppies through their specialized training in order to be placed with the correct partner as an assistance dog.

We look forward to this special program which will be very interesting.

The Group Meetings will meet on the Second Thursday, September as follows:

Lydia Group 9:30 a.m. at the home of Marilyn Stewart, Marilyn Stewart, hostess

Tabitha Group 7 p.m. in The Heritage Room (Third Thursday), Susan Moore and Sally Smith, hostesses

Martha Group 12:30 p.m. in The Heritage Room, Carol Bachman and Marilyn Combs, hostesses

Disciples Women Service Projects for September are:

Contacting group Forget Me Nots

Collection of School and Health Kits for Church World Service

September 12 Work and Eat Day

WORK: Clean Playroom toys using the dishwasher or hand wash, remove wax on sanctuary cushions

EAT: Bring your lunch and bring something to share if you like.

Bible Study for 2019-20 will be "The Church on a Mission." The Just Women Bible Study Materials will be used for the study in the groups on the second Thursday meeting.

We look forward to a great year in Disciples Women.

- Jane Martin

Also on the Disciples women's calendar

Other activities of DW include Sewing Group on Sept. 19 and Card Makers on Sept. 26.

On Sept. 20 and 21, The Mid America Disciples Women in the Southeast will meet at St. Charles CC. Marilyn Combs will attend the Retreat and you too are encouraged to participate in this outstanding event. It is important to be a part of the larger group. The meetings are at 6 p.m. on Friday and Saturday from 8:30 a.m. to 2:30 p.m. The Theme will be "145 Years of Disciples Women Mission Fellowship Services". If you wish to register, send \$20 by Sept. 14 to Judi Lingille, 3056 Arlmont, St. Louis, MO 63121.



Registration, Sponsorships, Advertising:

birdeasepro.com/kaechp

Come play, celebrate and support Kirkwood Area Every Child Promise. Not a golfer? Join us for our Fundraising Dinner.

Monday, October 7

- Buffet Lunch
- Golf Tournament
- Silent Auction
- Fundraiser Dinner

Tournament contact information:

314.651.1552 • kaechpgolftourney@gmail.com.



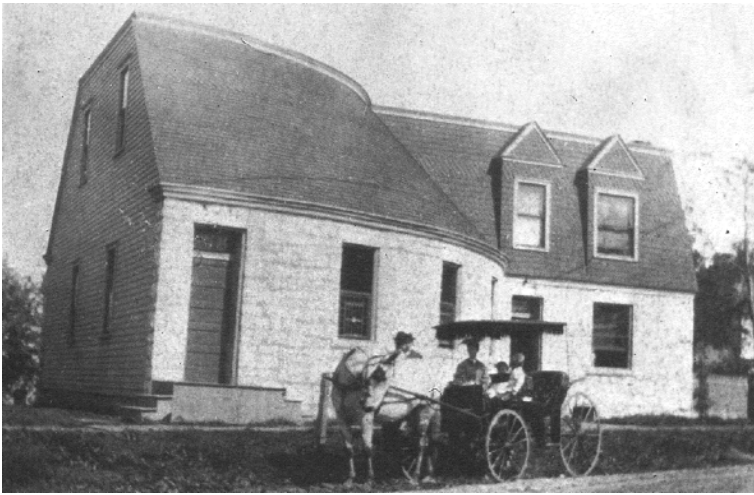
Every Child Promise

*Hole-in-One Prize!
2019 4Runner or Tacoma!
Sponsored by Jay Wolfe Toyota.
Additional auxiliary prizes.*

More information about Kirkwood Area Every Child Promise:

www.kaechp.org

*Several of KAEChP's component programs and coordination are housed within Webster Groves Christian Church (WGCC), and the facilities of Westborough Country Club are made available for this tournament by special arrangement with WGCC. In lieu of annual rent and event expenses, the first \$30,000 of net tournament proceeds are split evenly between KAEChP and WGCC with KAEChP receiving 100% of the net proceeds exceeding \$30,000.



This is the first building of the "Church at Tuxedo" in 1895. In 1925, its name was changed to Webster Groves Christian Church. It was located at Bompart and Tuxedo in Webster Groves. (photographer unknown)

Time to plan our 125th anniversary

This Christmas Eve will mark the 125th anniversary of the founding of our church.

In celebration of that anniversary and the many wonderful years still to come, we will be forming an "Anniversary Celebration Committee," which will decide what events and reunions our church will host over the next year. If you are interested in being a member of this committee, please email Keiler Swartz at keiler.swartz@gmail.com.

Join the CROP Walk Oct. 6

Susan Moore and Lisa Cripe are coordinating the Webster Groves Christian Church team for the Sunday, Oct. 6 CROP Hunger Walk.

Go to <http://bit.ly/cropwgcc> for the Webster Groves Christian Church page, where individuals can register as a part of the team and donate online to the Webster Groves Christian Church team and/or to individuals.

Location: Eden Theological Seminary

Sign In Time: 4:30 p. m.

Walk Distance: 1 Mile and 3 mile routes.

The Holy Crepe Food Truck will be on-site from 4:15 until 7 p.m.

Donate a diaper, have some pizza

Firenza Pizza in Webster Groves is hosting a diaper and wipe drive Mondays in September, starting Sept. 9. Every donation benefitting Nurses for Newborns will bring a discount on pizza.



Please consider making a generous donation to the **Haitian Student Fund** at Webster Groves Christian Church.

Current balance in the Haitian Student Fund is \$9,000.

For the coming school year, our Haitian student will need \$17,050 in total in order to continue his studies at Rockhurst University in Kansas City.

Among items that are needed:

Steam iron

Carry-on suitcase or duffle for weekend trips

Mini-refrigerator - Limited to no more than 2.9 cubic ft. & 700 watts

Small Microwave Oven

Gift certificates:

Certificates: Target, Kohl's, Ikea, or Bike shop



The Gallery Within will be hosting an opening on **Sunday Sept. 22** featuring the art of Jack Keijo Steele. The opening will run from **4pm -7pm.**

What is "real" - real life, real feelings, real experience? Working in the middle of the twentieth century, and often associated with a style known as 20th century or urban "realism", Jack Keijo Steele created images that reflect daily life, troubled times, and deep feeling, allowing us to see beneath and beyond the images to explore profound questions of human life, culture, joy, and pain. As one observer from the Cranbrook Art Museum has described it, referring to a war image, "Steele depicts this subject with a painterly vigor that verges on abstraction, relating the emotional impact of war as only the artist can convey it."

This show of Steele family-owned pieces includes finished works as well as studio sketches, notes, and works-in-progress.



Your gift can make a huge difference

The Webster Groves Christian Church Neighbor Fund receives designated gifts from members and friends of WGCC, and is intended to allow our congregation to respond to unanticipated and unbudgeted requests for assistance.

Over the years, the Neighbor Fund has helped hundreds of people with rent and utility assistance, transportation, gasoline, food, repairs, medications, books, childcare, and much more.

The Neighbor Fund is maintained by our church administrator and is used at our pastor's discretion to aid those within our congregation and those

from our wider community with one-time emergency assistance.

Our congregational budget includes money for the Neighbor Fund, but the majority of income from the fund comes from generous and faithful designated gifts by WGCC members.

In addition to your regular support of our budgeted mission and ministry, please consider a one-time or ongoing gift to the Neighbor Fund.

Contributions should be marked "Neighbor Fund," and will be used to provide assistance, care, and hope to our neighbors.

IN OUR PRAYERS ...

Recent concerns

- For Marilyn Combs' daughter Janet, who was facing a mastectomy after several chemo treatments.
- For the family of Santonio Cox, who became the 13th child to die of gun violence in St. Louis this year. Santonio was a student of Keiler Swartz.
- For other students of Keiler's including Cody, an eight grader who is missing.
- For James Burney, who is leaving the Glendale Police Department to start a job with the North County Police Cooperative.
- For Sue Winchester, a friend of Donna's dealing with health issues.
- For the family of Pat Roseman's friend Betty, who passed away after a battle with cancer.
- For Gilda Rzchowski, who is recovering from a broken wrist.
- For the sister of Carole Hughes, who has gall bladder and liver cancer.
- For Bev Richmond and for Doug Richmond, who are facing health issues.
- For Tyreek Lewis, who had a stroke and is in rehab.
- For Andy Lindberg, who is recovering from a foot amputation.
- For Analyn Howell's sister who is battling cancer.
- For two coworkers of Julie DeKinder fighting cancer.
- For Jeff Tedford, who is rehabbing at home.
- For Jim Simpson and his wife Bobbie, as Jim battles esophageal cancer.
- For Gloria Hutchings
- For Lou Garr, a friend of Bob Rose's who is battling cancer.
- Dick Savage, who continues to ask for our prayers.
- For Jane Yount.
- Bill Sullivan, as he continues to recuperate.

Thanks for ...

- Gerardo, a friend of Deb who delivers the message that God is good.
- For all students and teachers as the school year begins.
- For all those donating to Project NOW.

Community

- For refugees and immigrants.
- For families who have lost children to domestic violence.

Ongoing concerns

- Bill Woodrome
- John Norris
- Doris Derickson
- Kathy Carson
- Michelle Fielden
- Jane Michener

WEBSTER GROVES CHRISTIAN CHURCH MISSION STATEMENT:

Our mission: Following Jesus' teaching and sacrificially serving the people who are the most marginalized.

UPCOMING EVENTS

**ACCESS THE CALENDAR
AT WGCC.ORG**

WEDNESDAY, AUG. 28

6 p.m.: Kirkwood School NOW kickoff

SUNDAY, SEP. 1

9 a.m.: Christian formation

10:30 a.m.: Worship

MONDAY, SEP. 2

Labor Day. Office closed

THURSDAY, SEP. 5

11 a.m.: Disciples Women meeting and luncheon

SUNDAY, SEP. 8

9 a.m.: Christian formation

10:30 a.m.: Worship

5 p.m. Room at the Inn

THURSDAY, SEP. 12

7:30 a.m.: Foodbank run

Disciples Women group meetings

Disciples Women work and eat day

SUNDAY, SEP. 15

9 a.m.: Christian formation

10:30 a.m.: Worship

THURSDAY, SEP. 19

9:30 a.m. Sewing group

FRIDAY-SATURDAY, SEP. 20-21

Disciples Women SE (St. Charles CC)

SUNDAY, SEP. 22

9 a.m.: Christian formation

10:30 a.m.: Worship

4 p.m.: Jack Keijo Steele art opening

TUESDAY, SEP. 24

Items due for next Witness

THURSDAY, SEP. 26

9 a.m. Cardmakers

5 p.m.: Room at the Inn

SUNDAY, SEP. 29

9 a.m.: Christian formation

10:30 a.m.: Worship

SUNDAY, OCT. 6

9 a.m.: Christian formation

10:30 a.m.: Worship

4:30 p.m.: CROP Walk

MONDAY, OCT. 7

KAECbP Golf Tournament

Webster Groves Christian Church

(Disciples of Christ)

A Global Mission Congregation
1320 West Lockwood Ave.
St. Louis MO 63122



The SEGA connection newsletter is available at <http://www.mid-america-disciples.org/>

Webster Groves Christian Church

1320 West Lockwood Avenue
Saint Louis, MO 63122

Phone: 314-961-3232 / Website: www.wgcc.org

Rev. Dr. Jeff Moore, Pastor

jeffmoore@wgcc.org

Robin Woodrome, Choir Director

Lisa Cripe, Organist

lisacripe@wgcc.org

Jeff Wolf, Lead Custodian

jeffwolf@wgcc.org

Gary Smith, Custodian

Steve Staicoff, Office Manager

admin@wgcc.org

Witness Articles

brosepd@hotmail.com